

APPLICANTS

Columbia University is an Affirmative Action Equal Opportunity Employer and encourages women, minorities, economically disadvantaged, and persons with disabilities to apply.

The position requires applicants to be citizens or permanent residents of the United States. Individuals on a temporary visa are unfortunately not eligible. Both MDs and PhDs are invited to apply.

Interested applicants may request a brief phone consultation regarding their research interests and the application procedure.

Applicants must send their CV, as well as a 2–3 page personal statement describing their research interests and career development goals to:

Cynthia.Leger@nyspi.columbia.edu
Division of Child and Adolescent Psychiatry
Columbia University/NYSPI
1051 Riverside Drive, Unit 78
New York, NY 10032

Rolling applications will be accepted until **January 1, 2022.**

columbiapsychiatry.org/education-and-training/research-training/child-psychiatry-translational-research-fellowship



COLUMBIA

COLUMBIA UNIVERSITY
DEPARTMENT OF PSYCHIATRY

DIVISION OF CHILD AND
ADOLESCENT PSYCHIATRY



COLUMBIA UNIVERSITY
DEPARTMENT OF PSYCHIATRY
College of Physicians and Surgeons

Division of Child &
Adolescent Psychiatry

Postdoctoral Fellowship for Translational Research in Child Psychiatric Disorders NIMH Funded T32

Positions Available July 1, 2022



Postdoctoral training fellowship positions are available to child psychiatrists, psychiatrists, neuroscientists, and psychologists to conduct translational research in childhood psychiatric disorders.

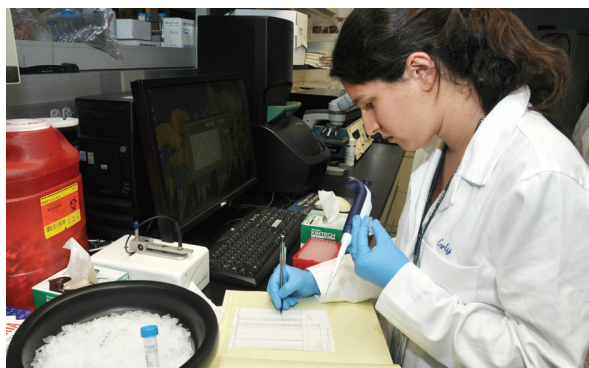
Research topics range from investigating the neurobiological basis of neurodevelopmental conditions, to conducting clinical trials, to implementing and disseminating evidence-based treatments in the community. The program is interested in focusing on understudied populations, including racial/ethnic minorities.

TRAINING and MENTORING

Translational research at the Columbia University Division of Child and Adolescent Psychiatry includes a strong emphasis on interdisciplinary training and strong programmatic oversight to ensure that trainees develop the breadth of knowledge and technological tools required to successfully pursue their research endeavors. Dual mentorship by our outstanding faculty, with strong emphasis on cross-disciplinary collaboration, is a core feature of the T32 Fellowship Program.

Trainees will be mentored in major areas of research concepts:

- NIMH RDoC criteria
- Translational neuroscience and therapeutics
- Biostatistics
- Research design, management, and ethics
- Scientific writing and presenting
- Grant preparation

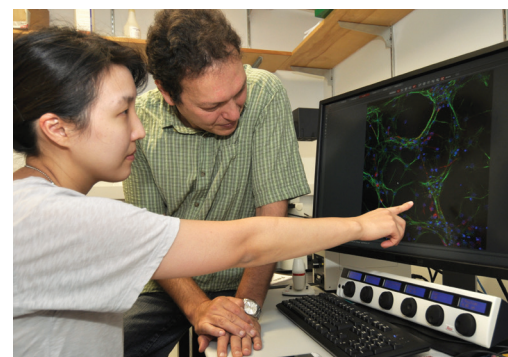


The training program is designed to impart the training and skills necessary to submit a competitive career development (K) award.

Applicants must be U.S. citizens or permanent residents

RESEARCH and MENTORS

The training program is led by a group of internationally recognized researchers with specialties in molecular and developmental neuroscience, neuroimaging, epidemiology, and clinical trials research, including psychological and psychopharmacological interventions and prevention research. Some diagnostic areas include anxiety, mood, attention, autism, risk-taking behaviors, schizophrenia, and suicidality. There are over 50 potential faculty with whom to work.



Candidates can work in any of our basic neuroscience, epidemiology, imaging, or clinical research laboratories.

T32 Executive Committee:

Randy P. Auerbach, PhD
Cristiane Duarte, PhD
William Fifer, PhD
Madelyn Gould, PhD
Rachel Marsh, PhD
Catherine Monk, PhD
Laura Mufson, PhD
Jeremy Veenstra-VanderWeele, MD

