

## APPLICANTS

Columbia University is an Affirmative Action Equal Opportunity Employer and encourages women, minorities, economically disadvantaged, and persons with disabilities to apply.

**The position requires applicants to be citizens or permanent residents of the United States.** Individuals on a temporary visa are unfortunately not eligible. Both MDs and PhDs are invited to apply.

Interested applicants may request a brief phone consultation regarding their research interests and the application procedure.

Applicants must send their CV, a 2–3 page personal statement describing their research interests and career development goals by November 1, 2019 to:

Christina.Claudio@nyspi.columbia.edu  
Division of Child and Adolescent Psychiatry  
Columbia University/NYSPI  
1051 Riverside Drive, Unit 78  
New York, NY 10032

[columbiapsychiatry.org/education-and-training/research-training/child-psychiatry-translational-research-fellowship](http://columbiapsychiatry.org/education-and-training/research-training/child-psychiatry-translational-research-fellowship)



COLUMBIA

COLUMBIA UNIVERSITY  
DEPARTMENT OF PSYCHIATRY

DIVISION OF CHILD AND  
ADOLESCENT PSYCHIATRY



COLUMBIA UNIVERSITY  
DEPARTMENT OF PSYCHIATRY  
*College of Physicians and Surgeons*

Division of Child &  
Adolescent Psychiatry

## Postdoctoral Fellowship for Translational Research in Child Psychiatric Disorders NIMH Funded T32

### Positions Available July 1, 2020



**Postdoctoral training fellowship positions are available to child psychiatrists, psychiatrists, neuroscientists, and psychologists to conduct translational research in childhood psychiatric disorders.**

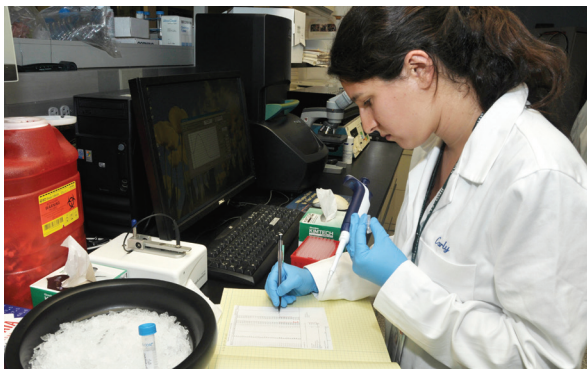
Research topics range from investigating the neurobiological basis of neurodevelopmental conditions, to conducting clinical trials, to implementing and disseminating evidence-based treatments in the community. The program is interested in focusing on understudied populations, including racial/ethnic minorities.

## TRAINING and MENTORING

Translational research at the Columbia University Division of Child and Adolescent Psychiatry includes a strong emphasis on interdisciplinary training and strong programmatic oversight to ensure that trainees develop the breadth of knowledge and technological tools required to successfully pursue their research endeavors. Dual mentorship by our outstanding faculty, with strong emphasis on cross-disciplinary collaboration, is a core feature of the T32 Fellowship Program.

Trainees will be mentored in major areas of research concepts:

- NIMH RDoC criteria
- Translational neuroscience and therapeutics
- Biostatistics
- Research design, management, and ethics
- Scientific writing and presenting
- Grant preparation



*The training program is designed to impart the training and skills necessary to submit a competitive career development (K) award.*

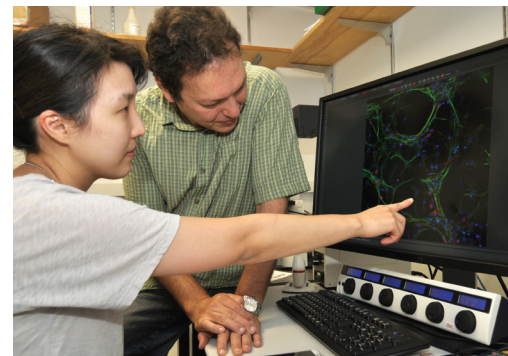
Applicants must be U.S. citizens or permanent residents

## RESEARCH and MENTORS

The training program is led by a group of internationally recognized researchers with specialties in molecular and developmental neuroscience, neuroimaging, epidemiology, and clinical trials research, including psychological and



psychopharmacological interventions and prevention research. Some diagnostic areas include anxiety, mood, attention, autism, risk-taking behaviors, schizophrenia, and suicidality. There are over 50 potential faculty with whom to work.



Candidates can work in any of our basic neuroscience, epidemiology, imaging, or clinical research laboratories.

### **T32 Executive Committee:**

Randy P. Auerbach, PhD  
Cristiane Duarte, PhD  
William Fifer, PhD  
Madelyn Gould, PhD  
Rachel Marsh, PhD  
Catherine Monk, PhD  
Laura Mufson, PhD  
Jonathan Posner, MD  
Jeremy Veenstra-VanderWeele, MD

