

## APPLICANTS

We particularly encourage applicants with identities that have historically been underrepresented in science, including those from minoritized or economically disadvantaged backgrounds and people with disabilities.

**The position requires applicants to be citizens or permanent residents of the United States.** Individuals on a temporary visa are unfortunately not eligible. Both MDs and PhDs are invited to apply.

Interested applicants may request a brief phone consultation regarding their research interests and the application procedure.

Applicants should apply at  
<https://rfmhhelp.nyspi.org/educationportal/>

**Questions about the application process? Please contact:**

Velvet.Dabek@nyspi.columbia.edu  
Division of Child and Adolescent Psychiatry  
Columbia University/NYSPI  
1051 Riverside Drive, Unit 78  
New York, NY 10032

Applications will be accepted on a rolling basis through January 15, 2025.

[columbiapsychiatry.org/education-and-training/research-training/child-psychiatry-translational-research-fellowship](https://columbiapsychiatry.org/education-and-training/research-training/child-psychiatry-translational-research-fellowship)

 **COLUMBIA** | COLUMBIA UNIVERSITY  
DEPARTMENT OF PSYCHIATRY  
DIVISION OF CHILD AND  
ADOLESCENT PSYCHIATRY

 **COLUMBIA** | COLUMBIA UNIVERSITY  
DEPARTMENT OF PSYCHIATRY  
DIVISION OF CHILD AND  
ADOLESCENT PSYCHIATRY

## Postdoctoral Fellowship for Translational Research in Child Psychiatric Disorders NIMH Funded T32

### Positions Available July 1, 2025



Postdoctoral training fellowship positions are available to child psychiatrists, psychiatrists, neuroscientists, and psychologists to conduct translational research in childhood psychiatric disorders.

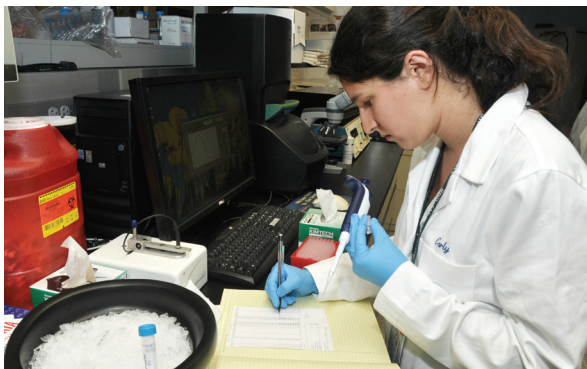
Trainees are expected to conduct research in areas that could range from animal models, neuroimaging, clinical trials, and the implementation and dissemination of evidence-based treatments. The program is designed to impart the training and skills necessary to submit a competitive federally-funded mentored career development award training grant or to secure an academic research faculty position.

## TRAINING and MENTORING

Translational research at the Columbia University Division of Child and Adolescent Psychiatry includes a strong emphasis on interdisciplinary training and strong programmatic oversight to ensure that trainees develop the breadth of knowledge and technological tools required to successfully pursue their research endeavors. Dual mentorship by our outstanding faculty, with strong emphasis on cross-disciplinary collaboration, is a core feature of the T32 Fellowship Program.

Trainees will be mentored in major areas of research concepts:

- The NIMH research domains criteria
- Translational neuroscience and therapeutics
- Biostatistics
- Research design, management, and ethics
- Scientific writing and presenting
- Grant preparation

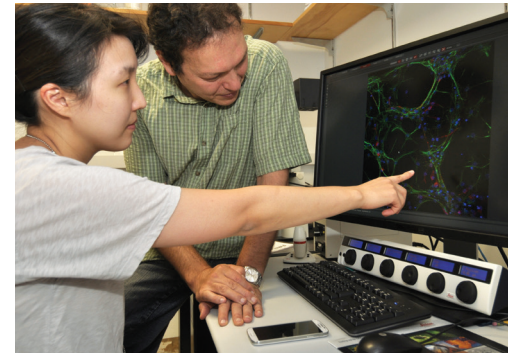


The training program is designed to impart the training and skills necessary to launch a successful independent career.

Applicants must be U.S. citizens or permanent residents

## RESEARCH and MENTORS

The training program is led by a group of internationally recognized researchers with specialties in molecular and developmental neuroscience, neuroimaging, epidemiology, and clinical trials research, including psychological and psychopharmacological interventions and prevention research. Some diagnostic areas include anxiety, mood, attention, autism, risk-taking behaviors, schizophrenia, and suicidality. There are over 50 potential faculty with whom to work.



Candidates can work in any of our basic neuroscience, epidemiology, imaging, or clinical research laboratories.

T32 Executive Committee:

Randy P. Auerbach, PhD

Cristiane Duarte, PhD

Katherine Elkington, PhD

Kate Dimond Fitzgerald, MD

William Fifer, PhD

Madelyn Gould, PhD

Claudia Lugo-Candelas, PhD

Rachel Marsh, PhD

Laura Mufson, PhD

Jeremy Veenstra-VanderWee, MD

